

damaged nests; museums and zoos for their co-operation; and my colleagues Brian Lloyd and Jim Mills for statistical guidance.

#### LITERATURE CITED

- AKAYAMA, T.; KISHIMOTO, K.; TANAKA, A. 1978. Optimum protein and energy levels in laying hen diet at different phases of egg production. Proc. 16th World Poultry Cong., Rio de Janeiro: 1656-1659.
- CALVERT, C. C. 1967. Studies on hatchability of fertile eggs from hens receiving linoleic acid deficient diet. Poultry Sci. 46: 967-973.
- MENGE, H. 1968. Linoleic acid requirement of the hen for reproduction. J. Nutr. 95: 578.
- ROMANOFF, A. L.; ROMANOFF, A. J. 1949. The avian egg. New York: John Wiley. pp. 1-918.
- WEATHERUP, S. T. C. 1974. The necessity of supplementing laying hen diets with linoleic acid. Br. Poultry Sc. 15: 325-331.

BRIAN REID, *Wildlife Service, Department of Internal Affairs, Private Bag, Wellington*

★

### SHORT NOTE

#### A NORTH ISLAND BROWN KIWI AND HER EGG

X-ray photograph of a captive North Island Brown Kiwi (*Apteryx australis mantelli*) taken 16-24 hours before she laid her 23rd egg in 50 months at Otorohanga. The egg (126 x 76 mm, 415 g) occupied a large portion of the body cavity, extending anteriorly to within 40-45 mm of the sternum and lying immediately dorsal to the gizzard. This egg was 19.3% of the hen's post-laying weight of 2.155 kg. Her other eggs have ranged in weight between 360 and 440 g.

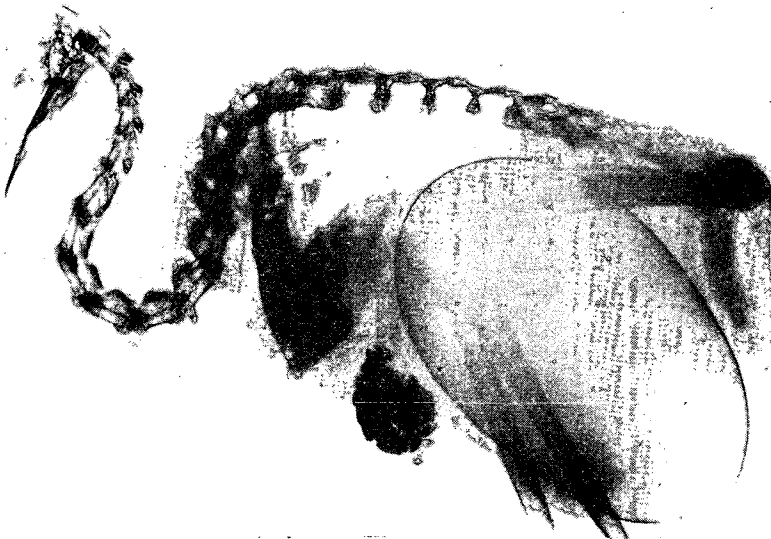


Photo: Copyright, Otorohanga Zoological Society

BRIAN REID, *Wildlife Service, Department of Internal Affairs, Private Bag, Wellington.*